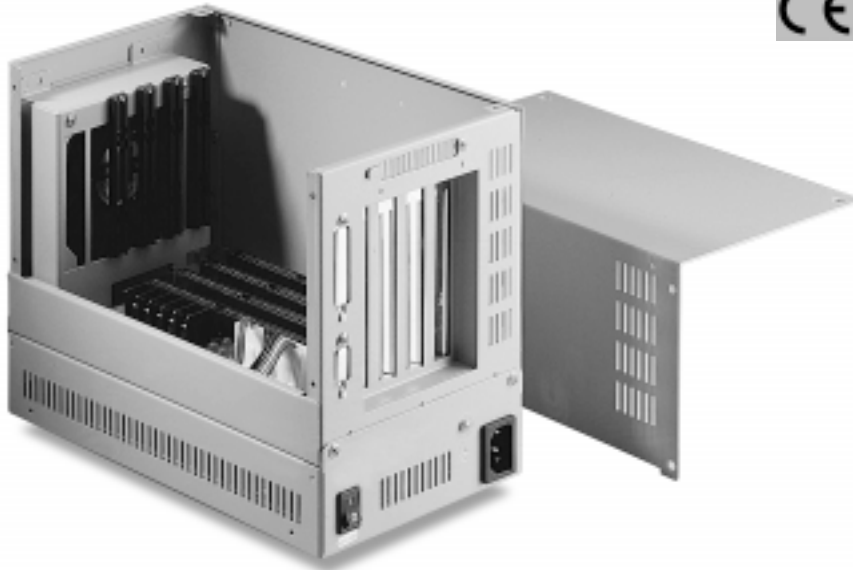


## Half-size, 4-slot Wallmount Chassis " High model, PISA or ISA Backplane"



The IEC-747, half-size wallmount chassis, is a compact and rugged enclosure, suited for on the factory floor standalone controller or other applications in harsh environments.

The IEC-747 contains an easily accesible 4-slot passive backplane and a 65 Watt auto-switching power supply mounted in a sepearte frame.

The optional PISA backplane allows for configurations with PCI add-on boards for high performance applications.

### Specifications

- **Construction** : heavy-duty steel.
- **Disk drive housing** : one 3½HDD
- **Control switches** :  
Power switch on backpanel
- **Cooling Fan**: one 49 CFM cooling fan on front panel with air filter
- **Standard color** : light gray. .
- **Dimensions** :  
150 (W) x 196 (H) x 241.5 (D) mm.
- **Weight** : 2.9 Kg

### POWER SUPPLY

- **Output rating** : 65 W (max.)
- **Input Voltage** : 90 to 132 V<sub>AC</sub> or 180 to 264 V
- **Input Frequency** : 47~66 Hz, single phase
- **Output**: +5 V @ 7 A, +12 V @ 2.5 A, -12 V @ 2.5 A (max.)
- **MTBF** : min. 50,000 hours at 25°C (70°F) and at 70% load.
- **Safety** : UL/CSA/TÜV/CE/FCC apprvd.
- **EMI** : Meets FCC/VDE Class A

### PASSIVE BACKPLANE

PBI-4S	4 ISA (half-size cards)
PBP-4S	3 PCI, 1 PISA

### ENVIRONMENTAL

- **Operating temperature** : 0 ~ 55°C
- **Storage temperature** : 0 ~ 70°C.
- **Humidity** :  
5 to 95% non-condensing
- **Vibration (operating)**:  
5 to 17 Hz, 0.1" double-amplitude displacement; 17 to 500 Hz, 1.5 G acceleration peak to peak

- **Shock (operating)**: 10 G acceleration peak (11 ms duration)
- **Safety** : UL/CSA/TÜV/CE/FCC apprvd.
- **EMI**: meets FCC/VDE Class A

### Ordering

- **IEC-747**: Half-size, Wallmount Chassis (high) with 6-slot ISA backpanel and 65 W power supply

PISA backplane optional

### DIMENSIONS

Units in mm

