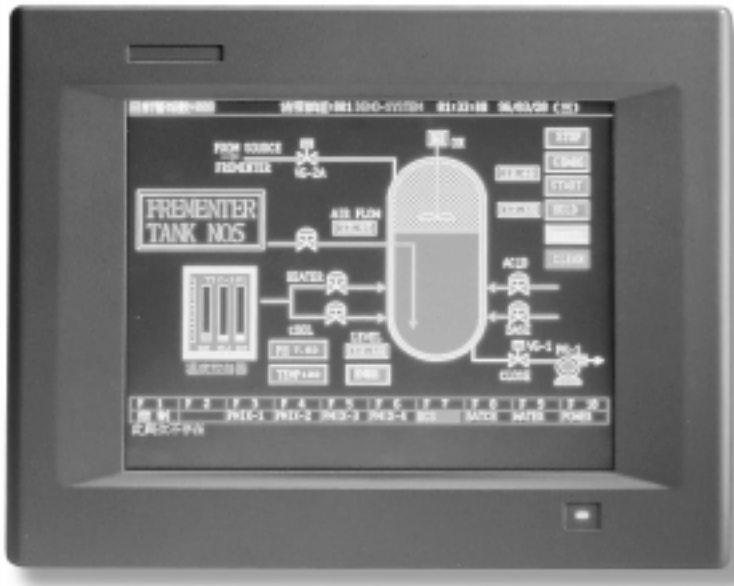


MMI Panel PC with 10.4" Flat Panel and Touchscreen " Ready-to-run with 486 / Pentium MiniBoard installed"



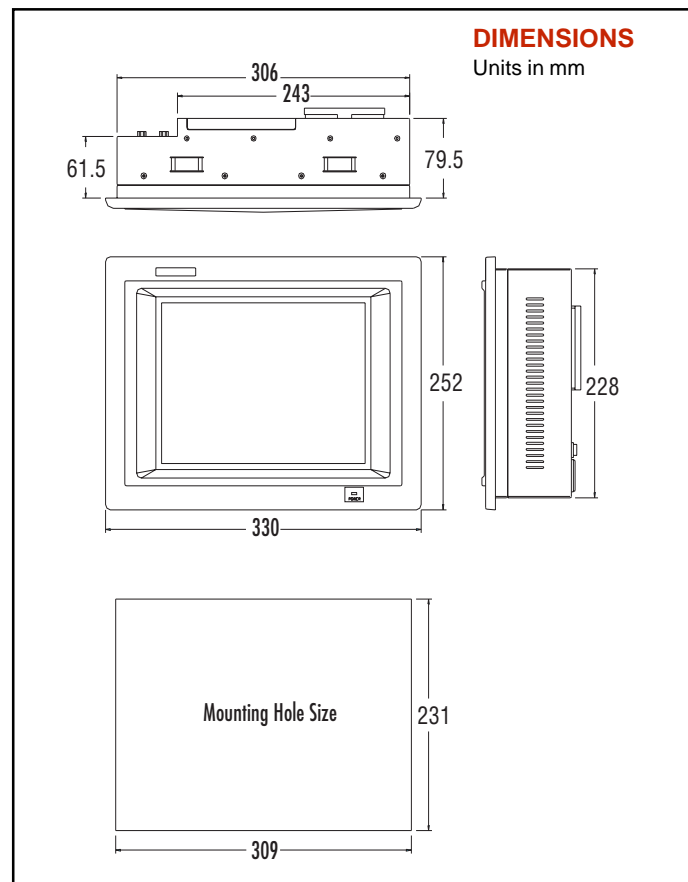
The IWS-527 is the most compact full function Man Machine Interface on the market. Its has a lightweight aluminium housing with heavy-duty plastic NEMA 4/12 front panel .

The core of the station can be either a high performance 486 or Pentium MiniBoard computer that combines all necessary functions from Flat Panel SVGA and RS-232/RS-485 to ethernet networking.

The IWS-520 can be optionally equipped with a touchscreen. Space is reserved for an internal 3½" HDD and, for initial setup or maintenance purposes, an external FDD can be connected.

Features

- NEMA 4/12 plastic front panel and lightweight aluminium housing
- Flat Panel choice :
10.4" SVGA color DSTN or long-life (25,000 hrs), high-brightness (200 cd/m²) 10.4" SVGA color TFT
- All-in-One Pentium or 486 MiniBoard with
 - PCI IDE Bus Master (Pentium only)
 - PCI SVGA Flat Panel controller
 - PCI Ethernet controller,
 - 4 Serial Ports RS-232 and RS-485
- Panelmount
- 30 CFM cooling fan (flow-in) on rear panel with air filter
- Space for a internal 3½" internal HDD
- 55 W switching power supply, or optional +12 or +24 V_{DC} power supply
- External FDD optional
- Analog resistive or capacitive touchscreen (optional)



Specifications

- **Construction** : heavy-duty plastic NEMA 4/12 front panel with light weight aluminium chassis
- **Disk Drive Housing** : space for one 3½" HDD
- **Cooling System** : One 30 CFM fan on rear panel
- **Dimensions** : 330(W) x 252(H) x 79.3(D) mm
- **Weight** : 3.1 Kg

FLAT PANEL DISPLAY

Flat Panel	Color DSTN	Color TFT
Size/type	10.4" VGA	10.4" SVGA
Display area in mm.	211.2 (H) 158.4 (V)	211.2 (H) 158.4 (V)
Resolution	640 x 480	640 x 480
Colors	4096	262,144

REAR PANEL CONNECTORS AND SWITCHES

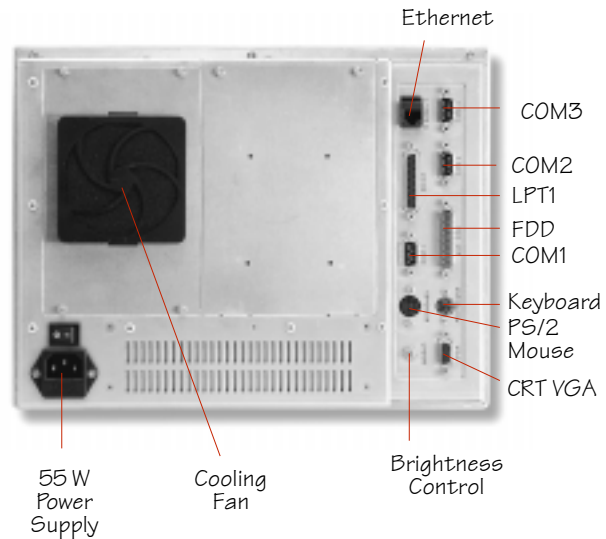
- **Serial** : 3 external 9-pin D-type connectors
- **Parallel** : 25-pin D-type connector
- **Keyboard**: 5-pin DIN connector
- **PS2 Mouse**: 5-pin Mini DIN
- **Ethernet**: RJ-45 connector for ethernet
- **CRT VGA** : 15-pin D-type connector for external CRT
- **EXT. FDD**: 25-pin D-type connector
- **Control** : display brightness

POWER SUPPLY

Power Supply	Input Voltage	Maximum Output Current	
		+5V	+12V
Universal / 55W	85~265V _{AC}	8A	1.2A
+24V _{DC} / 55 W	+16~+32V _{DC}	8A	1.2A
+12V _{DC} / 45 W	+9.5~+18V _{DC}	6A	1.1A

ENVIRONMENTAL

- **Operating Temperature** : 32~122°F (0~50°C)
- **Relative Humidity** : 5~95%, non-condensing
- **Altitude** : 10,000 feet or 3000 meters
- **Vibration** : 5~17 Hz, 0.1" double-amplitude displacement
17~500 Hz, 1.5G peak-to-peak
- **Shock** : 10 G peak acceleration, 11 msec duration
- **Safety** : meets UL/CSA/TÜV
- **EMI** : meets FCC/VDE Class A



MiniBoard Options

- All-in-One 486 Computer
 - PCI Enhanced IDE
 - PCI SVGA Flat Panel controller
 - PCI Ethernet controller,
 - 4 Serial Ports RS-232 and RS-485
- All-in-One Pentium Computer
 - PCI IDE Bus Master mode
 - PCI SVGA Flat Panel controller
 - PCI Ethernet controller,
 - 4 Serial Ports RS-232 and RS-485

Ordering

- ☐ **IWS-527TS/5** : MMI Panel PC with "Long Life " 10.4" TFT Display includes : All-in-One Pentium MiniBoard Computer, 133 MHz CPU, 16 MB memory, Universal 55 W power supply, 85~265 V_{AC}
- ☐ **IWS-527DS/5** : MMI Panel PC with 10.4" DSTN Display includes same as above
- ☐ **IWS-527TS/4** : MMI Panel PC with "Long Life " 10.4" TFT Display includes : All-in-One 486 MiniBoard Computer, 486DX4-100 CPU, 8 MB memory, Universal 55 W power supply, 85~265 V_{AC}
- ☐ **IWS-527DS/4** : MMI Panel PC with 10.4" DSTN Display includes same as above
- ☐ **IFD-40** : External 3½" FDD for IWS-527
Optional Touchscreen