

**PIA-3026**

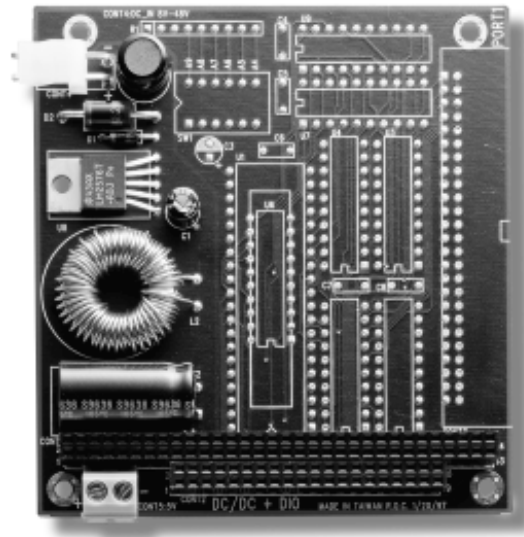
### **AC/DC Power Supply Module**

The PIA-3026 is a compact AC/DC switching power supply. The module is highly efficient and accepts a wide range of AC input.

- Input voltage range : 90 ~ 264 V<sub>AC</sub>
- Output voltage : +5 V<sub>DC</sub> @ 2A, -5 V<sub>DC</sub> @ 0.2 A,  
+12 V<sub>DC</sub> @ 1 A, -12 V<sub>DC</sub> @ 0.3 A,
- Input frequency : 47 ~ 63 Hz
- Inrush current cold : 20 A @ 110 V<sub>AC</sub>, 40 A @ 220 V<sub>AC</sub>
- Hold-up time : 16 ms
- Raise time: 500 ms
- Overload protection: power limit
- Short protection : auto-recovery
- MOSFET design
- Built-in line filter
- Operating temperature: 0 ~ +55°C
- Meets FCC, CE, TÜV
- Meets UL478 and CSA 22.2

#### **ORDERING**

- **PIA-3026** : PC/104 Power Supply Module



**PIA-3010**

### **DC/DC Converter Module**

The PIA-3010 is a DC to DC converter. The module greatly simplifies the design of switch mode power supplies. When connected to a PC/104 stack it makes your application suitable to be used in mobile applications such as car systems.

The DC to DC converter accepts any input between +8 and +48 V<sub>DC</sub>, which is converted into single + 5 V<sub>DC</sub> output. The converter includes cycle-by-cycle current limiting and thermal shutdown for full protection.

- Input voltage range : +8 ~ +48 V<sub>DC</sub>
- Output voltage: +5 V<sub>DC</sub> @ 3 A max.
- Switch frequency :  
52 KHz fixed frequency with internal oscillator
- Efficiency: over 80%
- Thermal shutdown and current limit protection
- Operating Temperature : 0 ~ +55°C

#### **ORDERING**

- **PIA-3010** : PC/104 DC/DC Converter Module