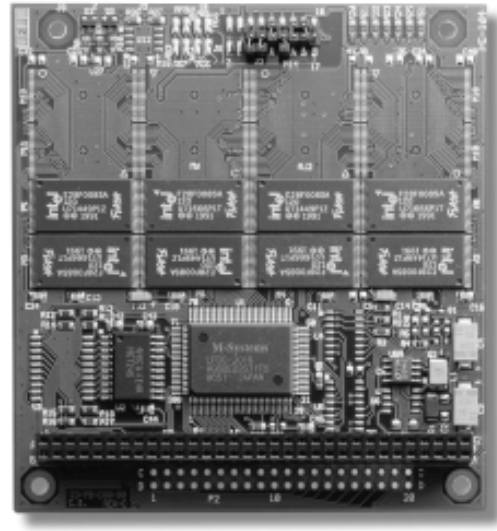


PIA-3810



PIA-382

Flash/EPROM Disk Module

The PIA-3810 is a high capacity Solid State Disk that can emulate either a Floppy drive (A, B) or a hard disk (C, D). It uses the latest types of Flash memory which allows you to create a single disk space of 4 MB (8 MB EPROM)

The module is fully BIOS compatible (INT13h), therefore existing software that is written for use with normal FDD's or HDD's needs no modification. Four modules can be linked together in one PC/104 stack to create a continuous space of 16 MB Flash (or 32 MB EPROM)

- Emulates one disk drive A, B, C or D
Flash (0.5 ~ 4 MB) or EPROM (0.5 ~ 8 MB)
- Up to 4 modules can be linked to emulate a single disk of 16 MB (Flash) or 32 MB (EPROM)
- Flash type support : SST28SF040 or AT29C040A
- EPROM type support : 27010, 27020, 27040 or 27080
- I/O address (jumper select) : 110h, 120h, 130h or 140h
- Memory address : C800h, CC00h, D800h or DC00h
- Power Requirements : single 5V @ 250 mA
- Operating Temperature : 0 ~ +55°C

ORDERING

- PIA-3810** : PC/104 Flash /EPROM Disk Module

High Density Flash Disk Module

PCM-382 utilizes the latest TSOP Flash memory chips for diskless operation. The PCM-382 conforms to the standard PC/104 form factor. Its built-in support for TrueFFS[®] means transparent under a wide variety of operating systems.

- Capacity: 1, 2, 4, 8, 16 or 32 MB Flash
- Up to 128 MB (4 cards) per system
- TrueFFS[®] (True Flash File System) software included
- Compatibility:
MS-DOS and MS Windows 3.x,
Windows 95, Windows NT 3.5x, Windows NT 4.0
VENIX, QNX and iRMX
all operating systems that use INT13
- Average seek time less than 0.1 ms
- Average transfer (read) rate of up to 1.2 MB/sec.
- Auto-bootable
- Fully compatible with HDD read/write
- Extremely reliable (MTBF > 1,000,000 hours)
- Operating temperature: 0 ~ +60°C

ORDERING

- PIA-382-x** : PC/104 High Density Flash Disk Module
(x= 1, 2, 4, 8, 16 or 32 MB Flash installed)