



**PIA-393**

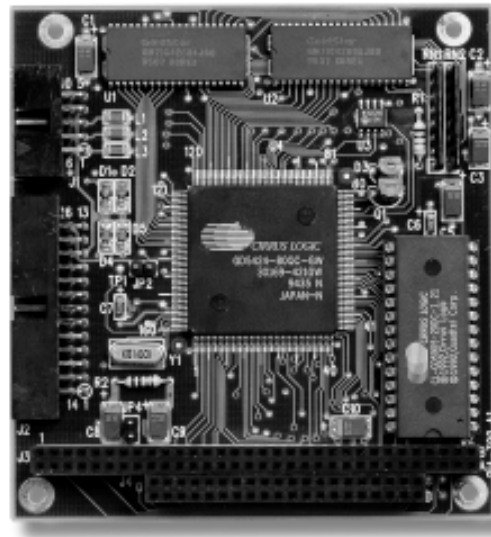
## **Flat Panel / CRT SVGA Module**

The PIA-393 supports monochrome LCD, EL, Plasma, color TFT, and STN LCD flat panel screens. It also supports interlaced and non-interlaced analog monitors in high resolution modes while maintaining complete IBM VGA compatibility. CRT and Flat panel displays can be used simultaneously.

- Chipset : CHIPS 65535
- Video memory : 512 KB (1 MB factory option)
- Display support : monochrome LCD, EL, Plasma, color TFT, STN LCD and CRT
- Supports simultaneous use of CRT and Flat panel
- Display resolution:
  - B/W panel : 800 x 600 x 64 grayscales
  - Color panel : 640 x 480 x 256 colors
  - CRT : 800 x 600 x 256 colors
  - 1024 x 768 x 16 colors
  - 1024 x 768 x 256 colors ( 1 MB)
- Optional custom BIOS to support a wide range of displays
- Built-in 34-pin general purpose connector
- Power Requirements : single 5V @ 200 mA
- Operating Temperature : 0 ~ +55°C

### **ORDERING**

- PIA-393** : PC/104 Flat Panel / CRT SVGA Module



**PIA-390**

## **True Color CRT SVGA Module**

The PIA-390 is a 16-bit Super VGA high resolution, high performance CRT display controller. It can deliver up to 16M colors.

- Chipset : Cirrus CL-GD5429 single chip, true color, SVGA controller
- Fully compatible with IBM VGA display
- 1 MB display RAM
- 0 wait state operation
- 32-bit GUI acceleration
- Bit block transfer ( BitBLT ) engine
- Color expansion for 8- or 16-bit pixels
- Built-in VESA feature connect for multi-media application
- Low-power CMOS design
- Power Requirements : single 5 V @ 200 mA
- Operating temperature: 0 ~ +55°C

### **ORDERING**

- PIA-390** : PC/104 True Color CRT SVGA Module